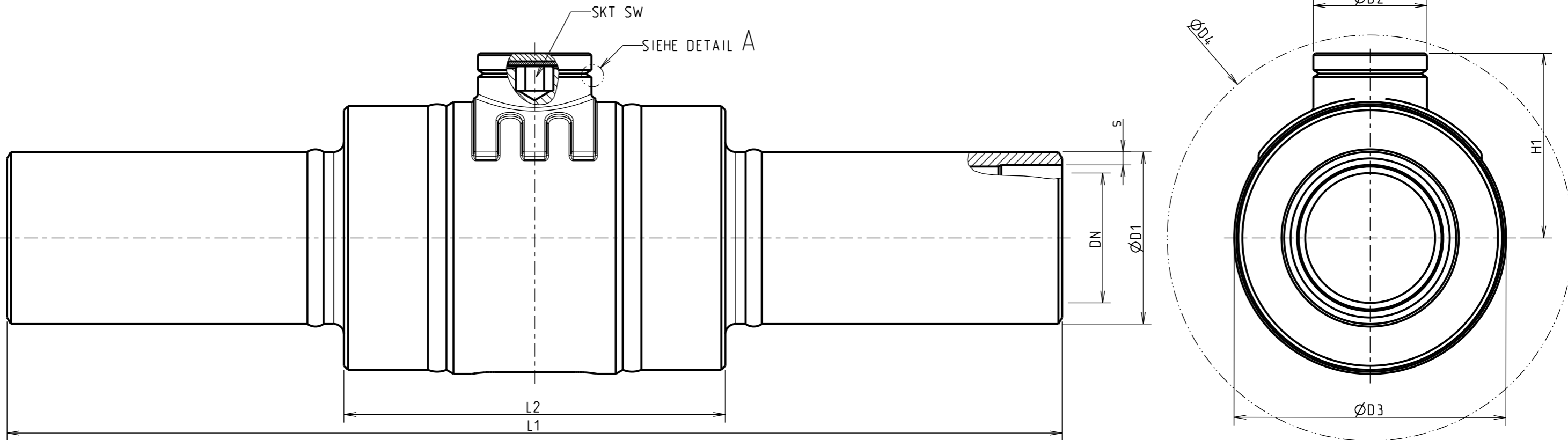


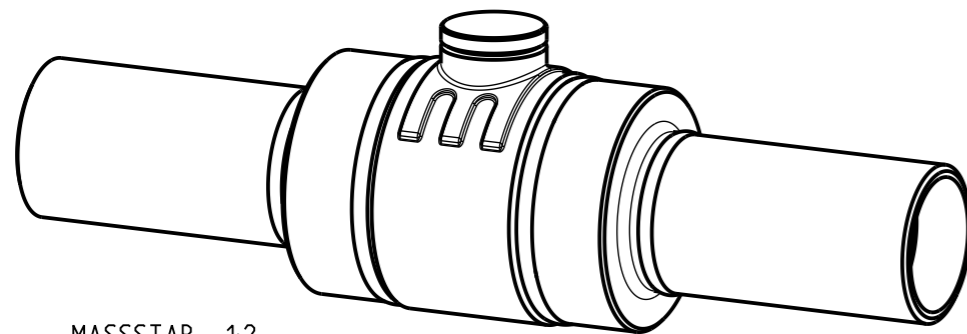
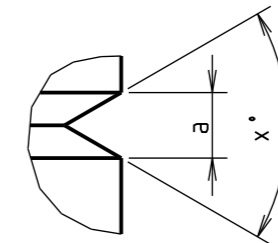
Model: WOH34787-1-KHO-BH-20-100-TAB
 Drawing: WOH34787-1-KHO-BH-20-100-TAB

Urheberschutz nach
 Copy right acc. to
 Droit d'auteur selon
 ISO 16016

KLINGER Monoball KHO Bedarfshahn DN20 bis DN100 VII-AF-KFC PN40
 KLINGER Monoball KHO branching valve DN20 to DN100 VII-AF-KFC PN40



DETAIL A
 MASSSTAB 5:1



MASSSTAB 1:2

DN	L1	L2	H1	ØD1	s	ØD2	ØD3	ØD4	SKT SW	a	x°	weight [kg]
20	230	70	37	26.9	2.6	22	49	80	6	1.5	90	1
25	230	78	40	33.7	2.6	22	55	85	6	1.5	90	1.5
32	260	94	46	42.4	3.2	28	67	100	8	1.7	60	2.5
40	260	75	54	48.3	3.2	28	84	112	8	1.7	60	3
50	300	93	68	60.3	3.2	35	101	142	10	2.9	60	4.5
65	300	115	78	76.1	3.2	35	125	162	10	2.9	60	8
80	310	130	99	88.9	3.6	50	151	205	12	3.5	60	9.5
100	325	155	114	114.3	3.6	50	185	238	12	3.5	60	15.5

KLINGER Fluid Control GmbH, Gumpoldskirchen, Austria

Gez. : 18.02.25 SJe

WOH34787/1

Technische Änderungen und eventuelle Irrtümer vorbehalten
 Modifications caused by technical development and any errors excepted